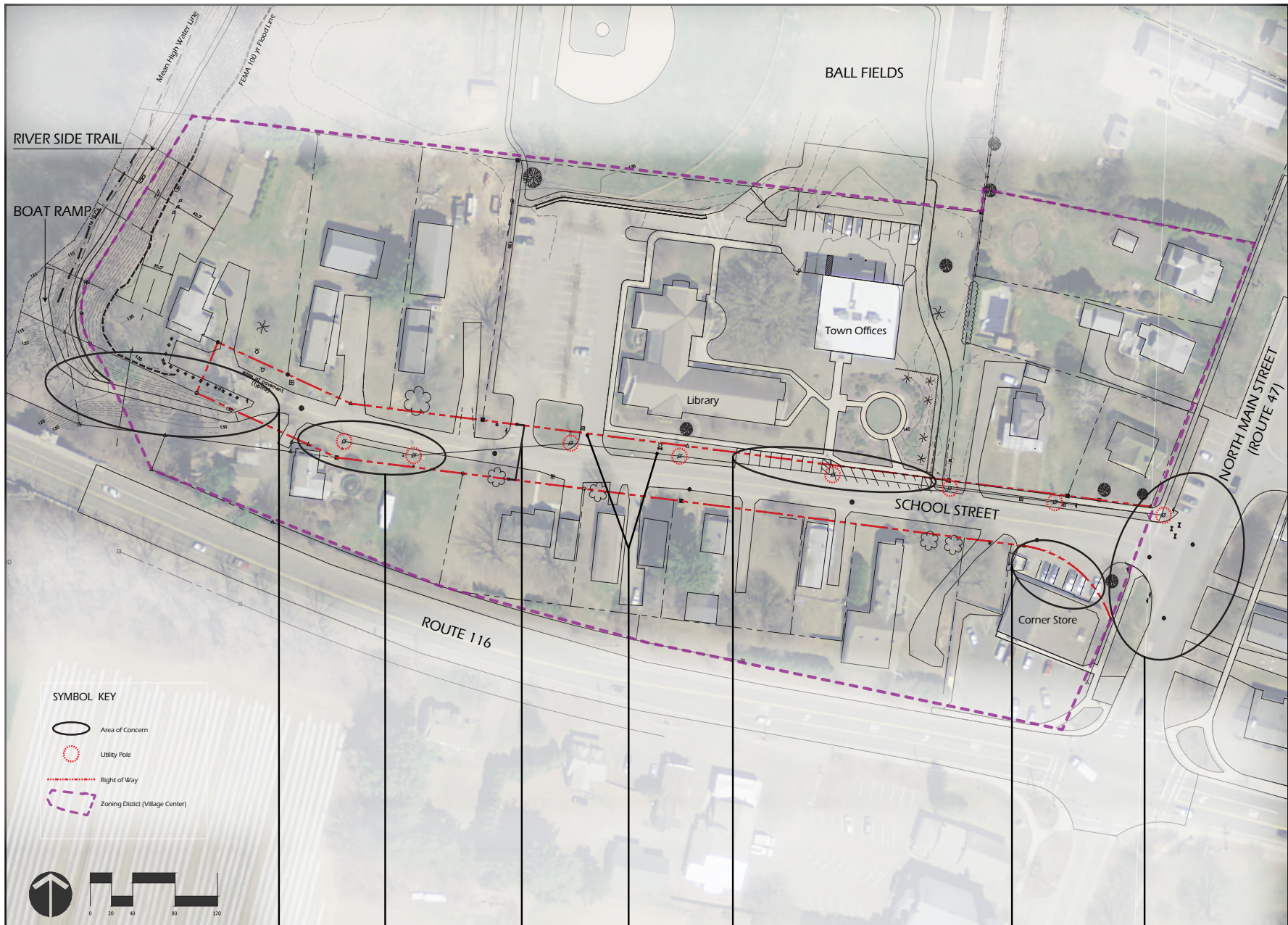




SCHOOL STREET STREETSCAPE DESIGN

Sunderland, MA

EXISTING CONDITIONS ANALYSIS



SYMBOL KEY

-  Area of Concern
-  Utility Pole
-  Right of Way
-  Zoning District (Village Center)



- Connection to River Walk
- ADA Issue

- Building Set back Pre-existing

- 50' Width of Right of Way

- Hydrant
- Drainage Utility

- Parking blocking town offices and memorial

- No clear entrance
- No Seating
- 17 parking spaces

- CS Parking Access

- Site Lines
- Width of Pavement
- Crosswalk Issues



Landscape Architecture
Civil Engineering
Planning
Land Surveying

4 Allen Place, Northampton, Massachusetts 01060
(413) 582-7000 • FAX (413) 582-7005
Email: bdg@berkshiredesign.com
Web: <http://www.berkshiredesign.com>

This drawing is not intended nor shall it be used for construction purposes unless the signed professional seal of a registered landscape architect, civil engineer or land surveyor employed by The Berkshire Design Group, Inc. is affixed above. Do not scale drawing for quantity take-offs or construction. Use written dimensions only. If dimensions are in conflict, contact The Berkshire Design Group, Inc. for clarification.

© Copyright: The Berkshire Design Group, Inc.
This drawing and all of its contents are the express property of The Berkshire Design Group, Inc. and shall not be copied or used in any way without the written consent of The Berkshire Design Group, Inc.

School Street
Sunderland, MA



Base Map

Revisions

NO.	DATE	DESCRIPTION

Date: June 6, 2019 Sheet Number:
Scale: 1" = 40'
Drawn By: JAH
Checked By: CEN

CONCEPT 1 - PLAN VIEW



ADA connection to the Riverside Trail

New crosswalk connects boat ramp and Riverside Trail to the new design

Additional Pathway through the right of way to the west of the library

17 new 90 degree parking spots in front of the library

Moved utility pole
Increased visibility and access to the town offices and veterans memorial.

New road pattern and narrowing of the School Street entrance

CONCEPT 2 - PLAN VIEW



CONCEPT 3 - PLAN VIEW



North Main St. and School St. Intersection - Existing Conditions



N. MAIN STREET (ROUTE 47)

Town Offices, Veterans Memorial, and Parking - Existing Conditions



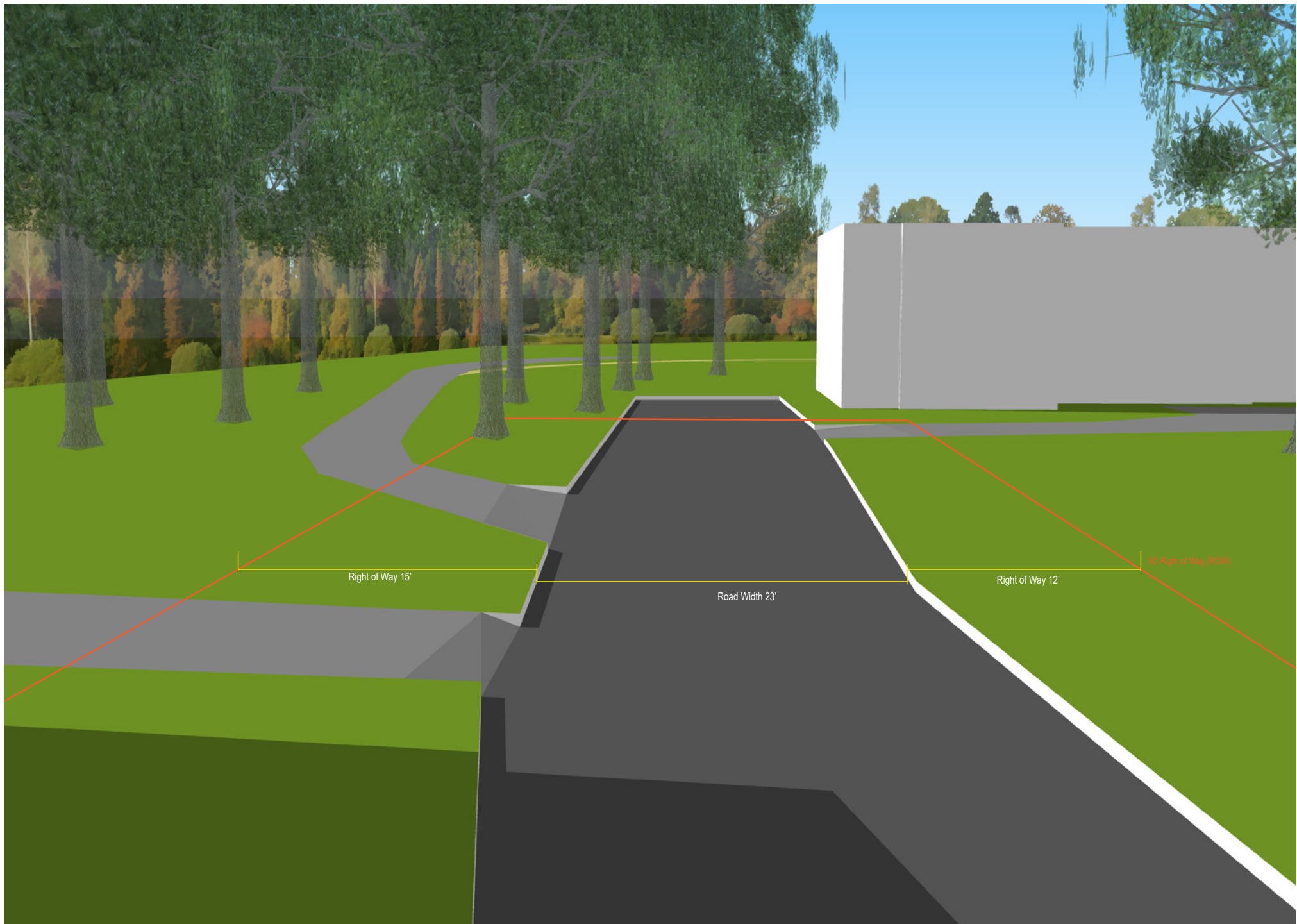
Sunderland Library and Street Parking - Existing Conditions



Western End of School Street - Existing Condition



Boat Ramp and Access to Riverside Trail - Existing Conditions



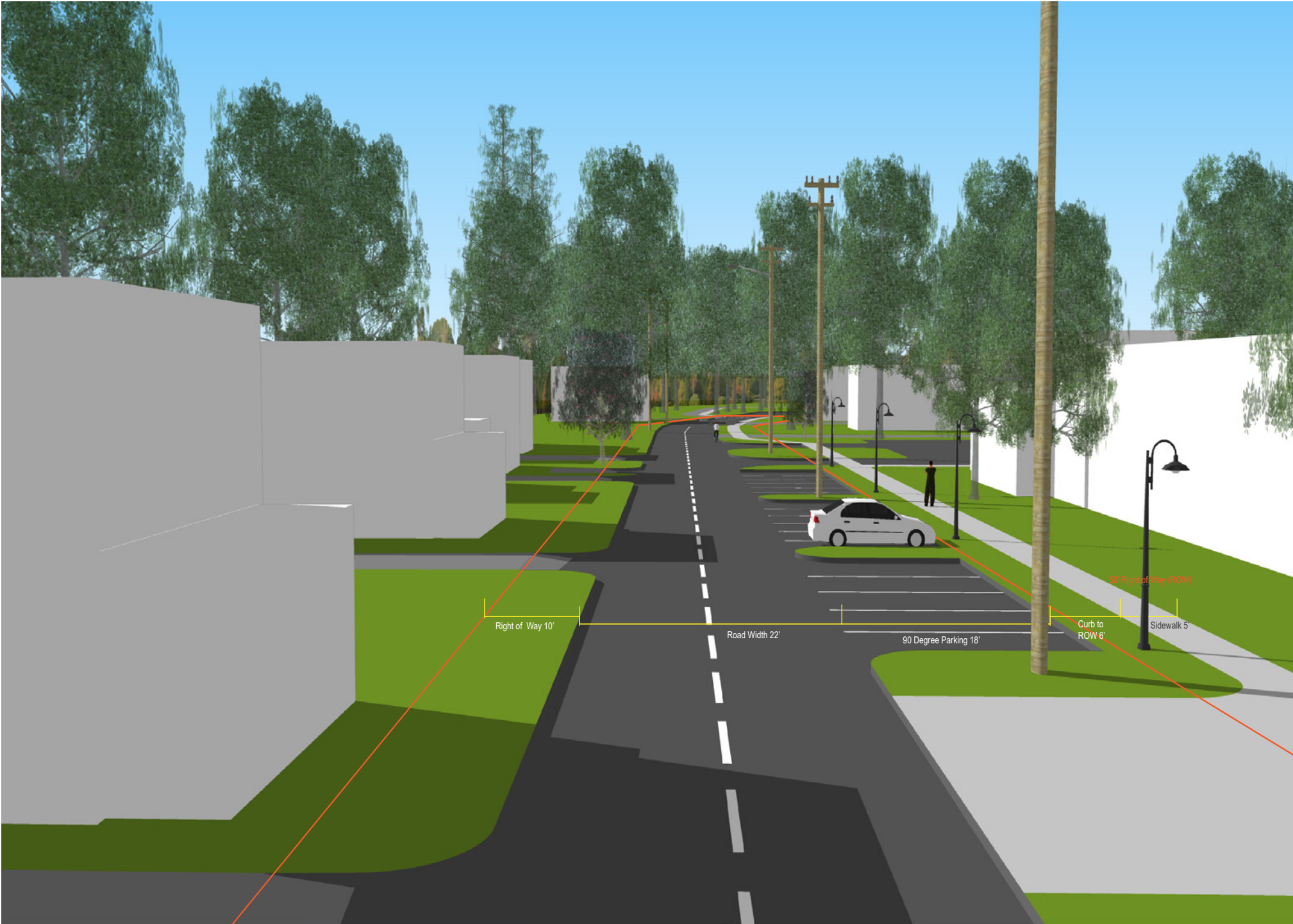
North Main St. and School St. Intersection - Concept 1



Town Offices, Veterans Memorial, and Parking - Concept 1



Sunderland Library and Street Parking - Concept 1



Western End of School Street - Concept 1



Boat Ramp and Access to Riverside Trail - Concept 1



North Main St. and School St. Intersection - Concept 2



N. MAIN STREET (ROUTE 47)

Town Offices, Veterans Memorial, and Parking - Concept 2



Sunderland Library and Street Parking - Concept 2



Western End of School Street - Concept 2



Boat Ramp and Access to Riverside Trail - Concept 2



North Main St. and School St. Intersection - Concept 3



N. MAIN STREET (ROUTE 47)

Town Offices, Veterans Memorial, and Parking - Concept 3



Sunderland Library and Street Parking - Concept 3



Western End of School Street - Concept 3



Boat Ramp and Access to Riverside Trail - Concept 3



Additional Streetscape Options

Existing



Banners



Trees

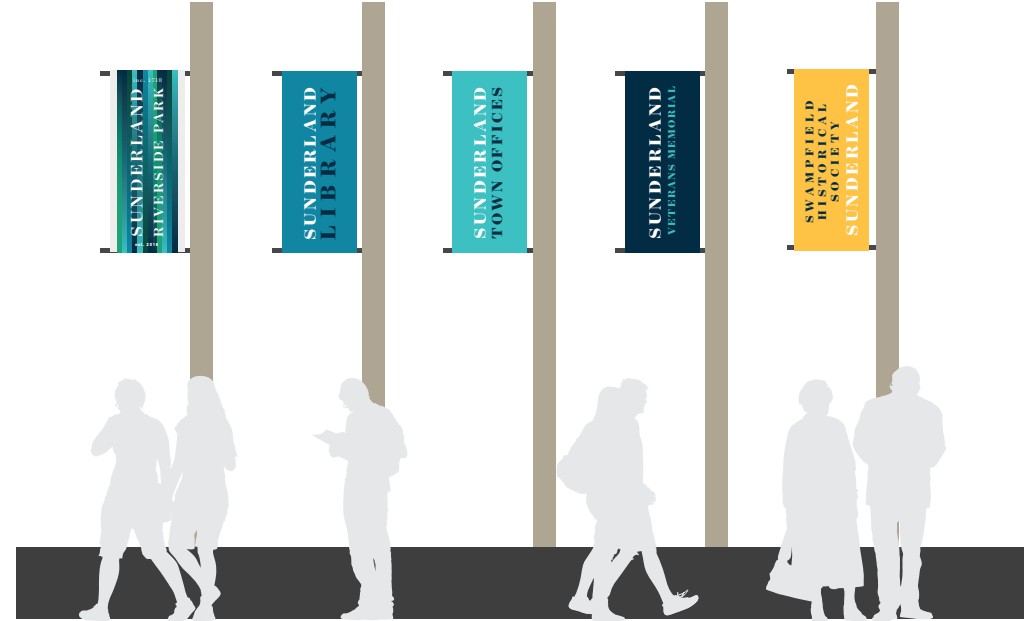


Shrubs



Additional Streetscape Options

Banners and Shrubs



SUNDERLAND RIVERSIDE PARK / JUNE 20, 2018

- 18" x 42" double-sided pole banner, 2" pocket top and bottom, 16 oz. vinyl, hardware included
<https://www.signs.com/pole-banners/>
- Qty: 5

Trees and Shrubs

